

7

Means Of Escape





Section 7

MEANS OF ESCAPE



Redlam Panic Bolts
119



Key Box's & Spares
119



Escape Ladder
120



Evacuation Chair
120



Rotary Hand Bell
120



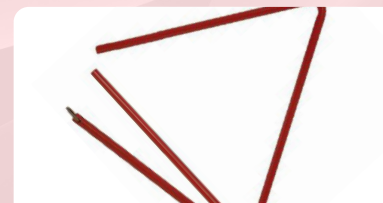
Agrippa Door Holders & Closers
121



Emergency Gas Horn & Protection Box and Fixings
122



Lifehamer
123



Fire Triangle
123



Fire Door Seal
123



Exit Stopper
123



Door Hardware
124

**REDLAM PANIC BOLTS**

Manufactured from cast aluminium, Redlam panic bolts are the economical solution to the problem of providing reliable security for internal emergency exits.

- Designed for emergency exit single doors. Breaking the Ceramtube™ results in the bolt sliding back automatically and unlocking the door.
- Designed for interconnecting emergency exit doors. Operates on one side of the door by breaking the Ceramtube™ and on the other side of the door by pushing the knob.
- Supplied complete with hammer and chain. Padlocks are available separately. Use of an optional padlock prevents unauthorised removal of Ceramtube™ without breaking the tube itself.
- Ceramtube™ Replacement cartridges for both Mk I and Mk II Redlam panic bolts are designed to produce no sharp edges when smashed. Packed in boxes of twenty (125mm with +/- 4mm tolerance).

Part No.	Description
46/32951	Panic bolt Mk2
46/33070	Keeper plate (spare)
39/51921	Hammer and chain (spare)
46/57050	Ceramtube (box of 20)
46/54457	Padlock (anti-tamper) size 1.25"



A



B

**KEY BOX AND GLASSES**

MK1 & MK2

- Manufactured from durable ABS plastic
- Unique 'snap fit' design
- MK1 key box supplied complete with printed glass

Part No.	Description
46/54280	MK1 key box (A)
46/27218	Spare break glass for MK1 key box (glass)
39/51921	Hammer and chain
39/93922	MK2 key box (B)
46/57345	Spare break glass for MK2 key (plastic)





Section 7

MEANS OF ESCAPE

ESCAPE LADDERS 15 AND 25 FOOT

- Steel ladder, for domestic use only
- Suitable for 2 and 3 storey buildings
- Fully assembled ready for emergency use
- Boxed – will fit under most beds for easy storage
- Simple and quick – attaches to window for escape
- Hooks over window openings
- Metal Rungs



Part No.	Description
466355	Escape ladder - 15 foot
466430	Escape ladder - 25 foot

Evacusafe™
innovation | manufacturing | training



EVACUATION CHAIR

- 4 permanent wheels provide easy manoeuvrability
- Flat seat for superior comfort
- Foot and armrests which aid relaxation of client
- Adjustable padded head cushion offers extra protection
- Rear brakes to secure your position on level ground

Part No.	Description
81/03646	Evacusafe "Standard" Chair

ROTARY HAND ALARM BELL

- Bell sounds 60db alarm at 35 meters
- Die cast aluminium dome powder coated red
- Weight 1.8kg overall dia 280mm and 135mm depth
- Base plate die-cast aluminium

Part No.	Description
42/52030	Rotary hand alarm bell





AGRIPPA DOOR HOLDERS

- Digital sound activated
- Learns the sound of your fire alarm system
- Easy, wire free installation and programming
- Daily timed release option
- 200 N Holding force
- Requires 2 x Alkaline C cell batteries
- Conforms to EN1155 and is CE marked
- Available in 2 x colours

Part No.	Description
81/03668	Agrippa Holder - White
81/03669	Agrippa Holder - Black

 listens
& learns

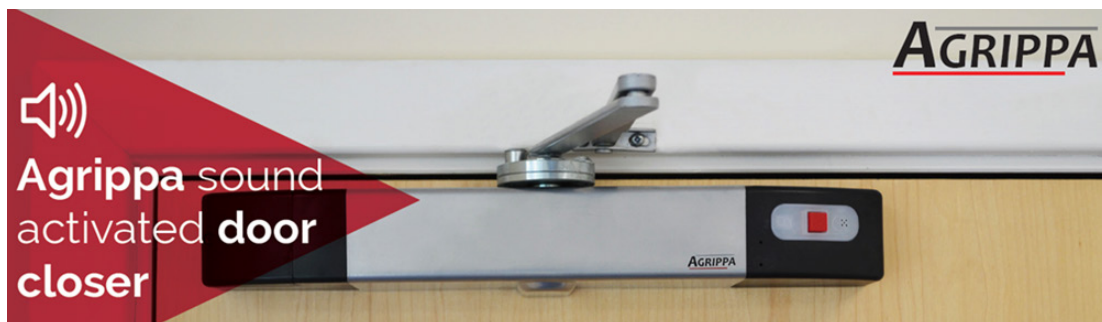
AGRIPPA



AGRIPPA DOOR CLOSERS

- Battery powered and wire-free
- Fail safe, closing the door upon battery failure
- LED display and low battery warning
- Daily timed release option to close the fire door at night
- Red button on unit to manually close the fire door
- Listens and learns the sound of your specific fire alarm providing greater reliability
- Available in 2 x colours

Part No.	Description
81/03666	Agrippa Closer – Black
81/03667	Agrippa Closer - Brushed Chrome





Section 7

MEANS OF ESCAPE

EMERGENCY GAS HORN

- To attract attention in an emergency fire situation
- Ideal for temporary installations such as construction sites, exhibitions and events
- Supplied in a blister pack for storage and transport
- Maximum 120db
- Sturdy, easy to fix (using 4 x screws)
- Designed to give an Emergency Gas Horn a home
- Makes it easy to identify a missing Gas Horn
- Do not position in direct sunlight or heat which will exceed 50 degrees celcius

Part No. Description

81/03644 Emergency Gas Horn (A)

81/03684 Emergency Gas Horn Backboard and Clip (B)

A



B



EMERGENCY GAS HORN PROTECTION BOX

- Sturdy plastic box with a translucent cover marked 'Fire Safety Air Horn'
- Includes: a carry handle, two securing clasps and is supplied with a wall mounting bracket
- Enables convenient storage for an Emergency Gas Horn
- The bracket can be mounted on to a wall and the box can be removed as required
- Easy to Fix (using 2 x screws)
- Allows Gas Horn to remain accessible and secure

Part No. Description

81/03676 Gas Horn Protection Box (A)

81/03683 Emergency Gas Horn Clip (B)

A



B





MEANS OF ESCAPE

Section 7

LIFEHAMMER

- Effective emergency escape tool
- Tough pointed double hammerhead combined with sharp protected blade
- Supplied with bracket
- TUV approved
- Breaks auto glass and cuts seat belts
- Overall Tool Size: 175mm length x 68mm width

Part No. Description

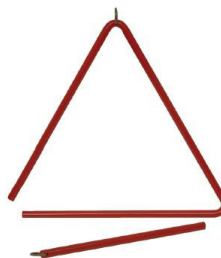
81/03294 Lifehammer

**FIRE TRIANGLE**

Made from powder coated steel the alarm triangle with striker is the perfect fire alarm for use when the most cost effective solution is needed ie: camp sites

Part No. Description

81/03653 Fire Triangle 340 x 340 x 340mm

**FIRE DOOR SEAL**

- Provides tamper evident protection for boxes, cases, fire exit doors, fire extinguishers and first aid boxes
- Large clear numbers facilitates maintenance checking and identification
- Total length is 228mm with 150mm operational length

Part No. Description

81/02876 Fire Door Seal Yellow

EXIT STOPPER

- Completely self-contained electronic door alarm
- Highly visible stop sign discourages unauthorised use of emergency doors
- Key operated override facility
- Can be installed and protecting doors in minutes
- Virtually indestructible polycarbonate housing
- Dimensions - 136mm H x 136mm W x 50mm D
- Low Battery Warning (9vdc alkaline battery included)
- 95-105 dB alarm when activated
- Set to sound for 30 seconds, 3 minutes or continuous

Part No. Description

81/03343 Exit Stopper (Single Door Application) (STI-6400)

81/03715 Exit Stopper (Double Door Application) (STI-6402)





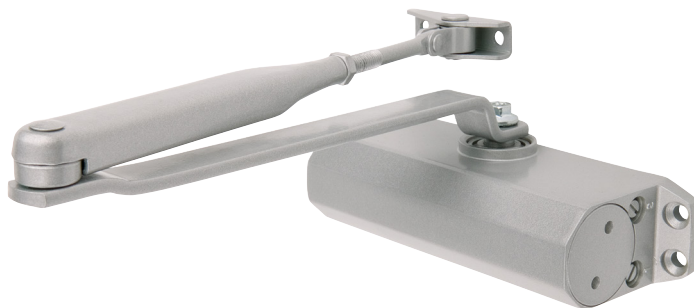
Section 7

MEANS OF ESCAPE

FIRE ESCAPE PANIC HARDWARE

DOOR CLOSERS

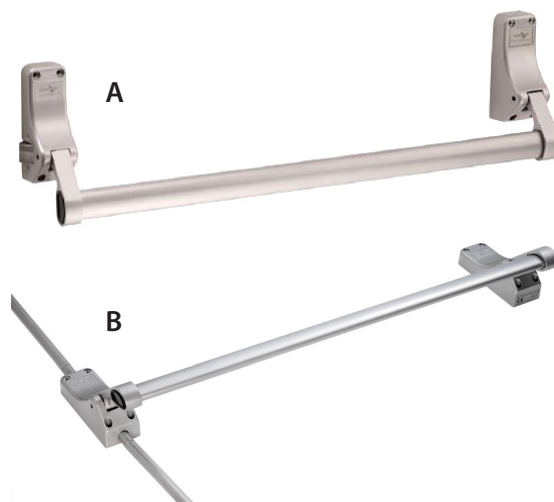
- CE and certifier fire and performance tested
- Suitable for use in all applications
- 10 year mechanical warranty
- Finished in stove enamelled silver
- Supplied with easyfix templates and instructions



Part No.	Description
81/03356	Overhead Door Closer Fixed Size 3 to suit doors upto 950mm wide
81/03357	Overhead Door Closer Adjustable Size 2-4 to suit doors upto 1150mm wide

PANIC LATCHES

- CE and certifier fire and performance tested
- Tested to BSEN 1125-2008
- 10 year warranty
- Finished in stove enamelled silver
- Supplied with 760mm bar as standard longer bar available
- Push bar panic latch supplied with single and double door strikes
- Rebated push bar to suit rebated double doors



Part No.	Description
81/03363	Contract Push Bar Panic Bolt (complete set)
81/03364	Longer Bar only (Fits XCL / XCB / XLL / XLB) 1100mm - plain bar
81/03365	Contract Push Bar Panic Latch c/w strike (A)
81/03366	Contract Push Bar Panic Latch - C/W vertical rods (B)

PUSH PAD LATCH

- Tested to BSEN 179/2008

Part No.	Description
81/03367	Push Pad c/w Pullman Latch to BS EN 179



OUTSIDE ACCESS DEVICE

- Tested to BSEN 1125-2008

Part No.	Description
81/03368	Outside Access Device c/w Cylinder

